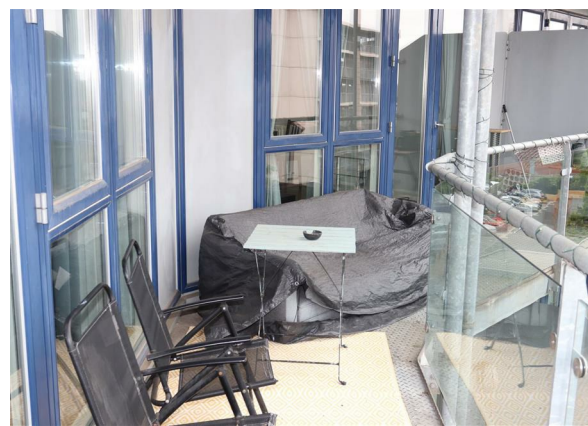
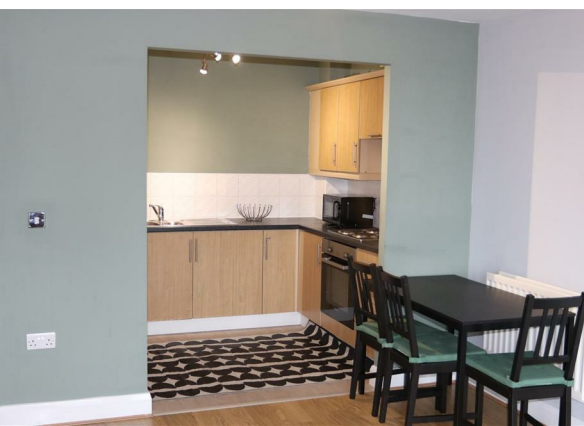
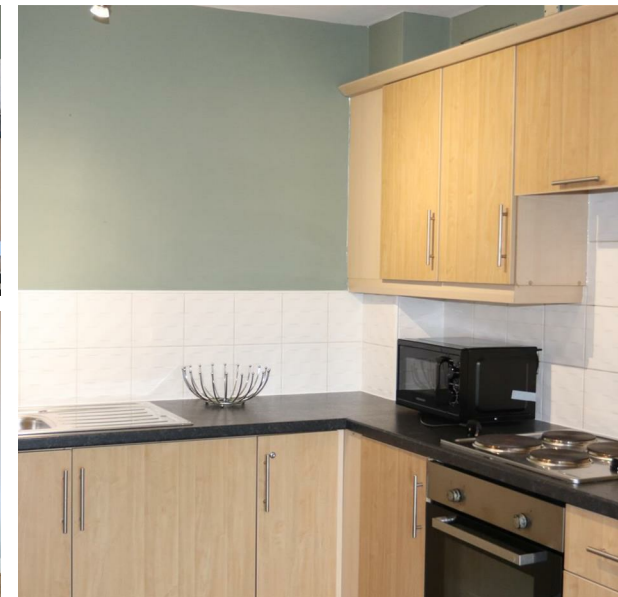


Bath Row, Birmingham, B15 2DG

Offers Over £185,000

Council Tax Band: B



Welcome to this charming property located on Bath Row in the vibrant city of Birmingham. This delightful well presented TWO BEDROOM TWO BATHROOM apartment, situated within short walking distance of THE MAILBOX, THE CUBE and the main Birmingham City Centre. Offering spacious living space, ALLOCATED PARKING and a full length balcony. house boasts a spacious reception room, perfect for entertaining guests or simply relaxing after a long day. With two cosy bedrooms and two bathrooms, this property offers comfort and convenience for its residents.

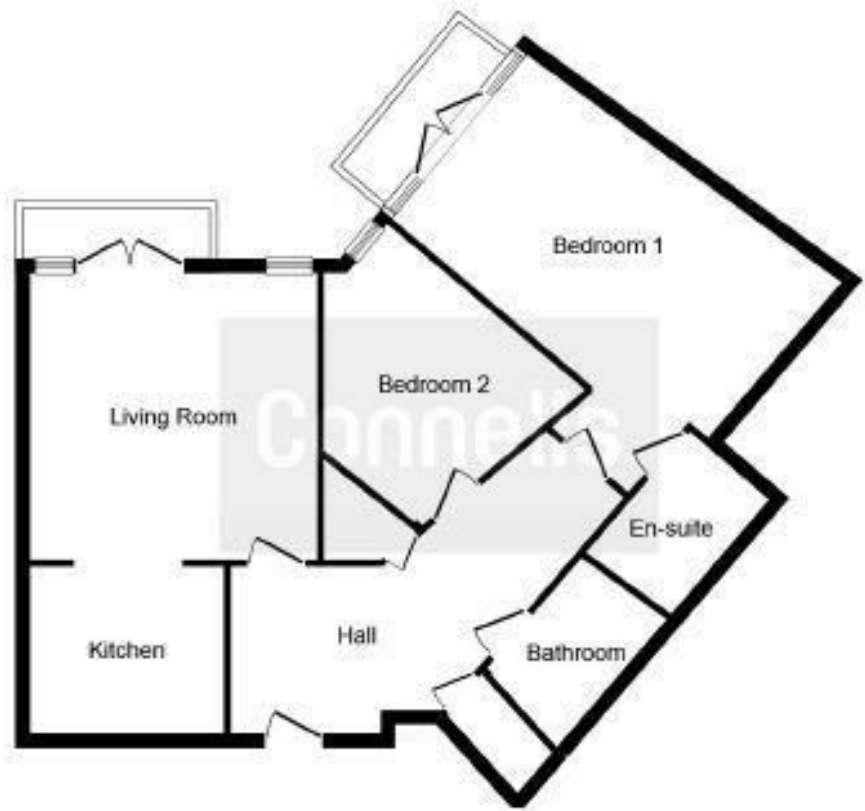
Built in 2005, this modern house spans across 807 square feet, providing ample space for all your needs. The property features an allocated secure parking space, ensuring that you never have to worry about parking in this bustling city.

With approximately 129 years remaining on the lease, this property offers a long-term investment opportunity for those looking to settle down in a prime location. Whether you're a first-time buyer, a growing family, or an investor, this house has the potential to be the perfect home for you.

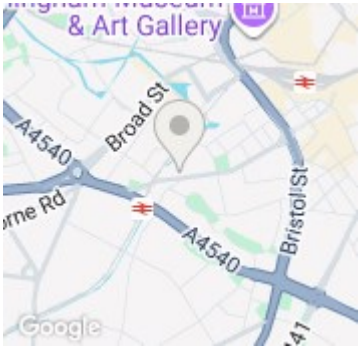
Don't miss out on the chance to own this lovely property in the heart of Birmingham. Contact us today to arrange a viewing and take the first step towards making this house your new home.



Open House Edgbaston



Floor Plan



Energy Efficiency Rating		
	Current	Potential
Very energy efficient - lower running costs		
(92 plus) A		
(81-91) B	83	83
(69-80) C		
(55-68) D		
(39-54) E		
(21-38) F		
(1-20) G		
Not energy efficient - higher running costs		
England & Wales	EU Directive 2002/91/EC	